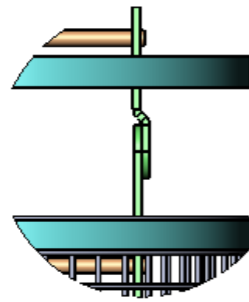


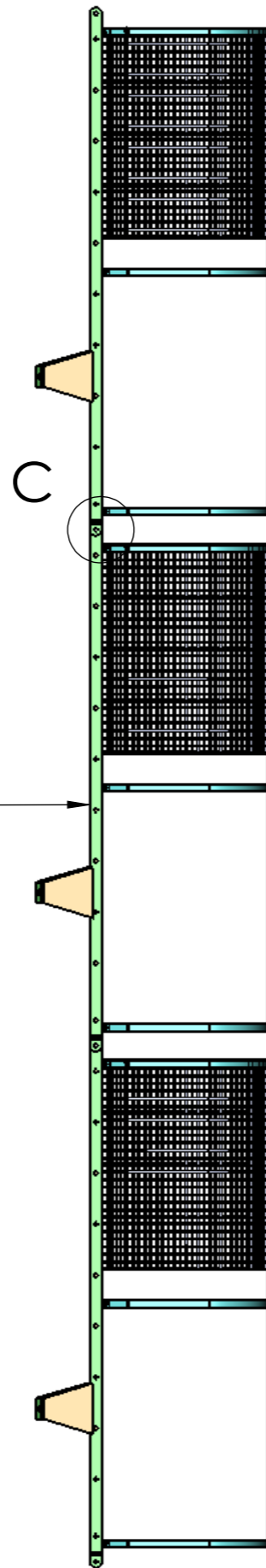
B



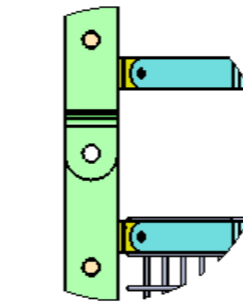
DETAIL B

SINGLE CAGE  
SL 1/S1

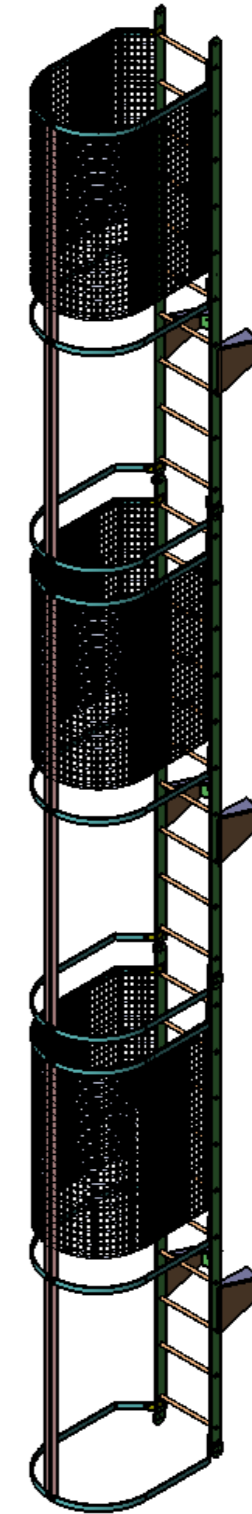
SINGLE LADDER MESH



C



DETAIL C



**Gemini Engineering**  
Structural & Mechanical Design & Fabrication

DRN: J.P.  
DATE: 5/09/2014  
SCALE: DO NOT SCALE

TOLERANCE U.O.S.		MACH. TOL	GEN. TOL
ABOVE	INCL.		
0.5	6	0.1	0.25
6	30	0.2	0.5
30	120	0.3	0.75
120	315	+0.5	+1
315	1000	-0.8	-2
1000	2000	1.2	3
2000	4000	2	5

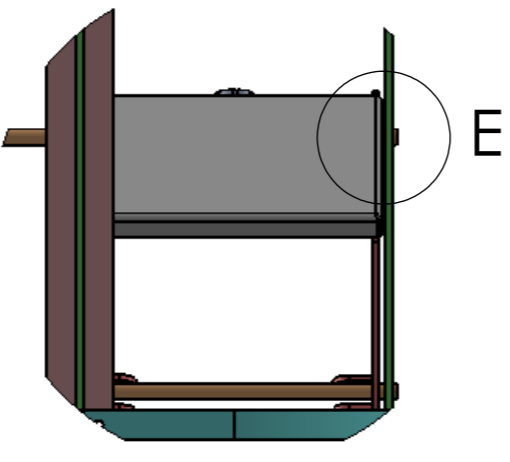
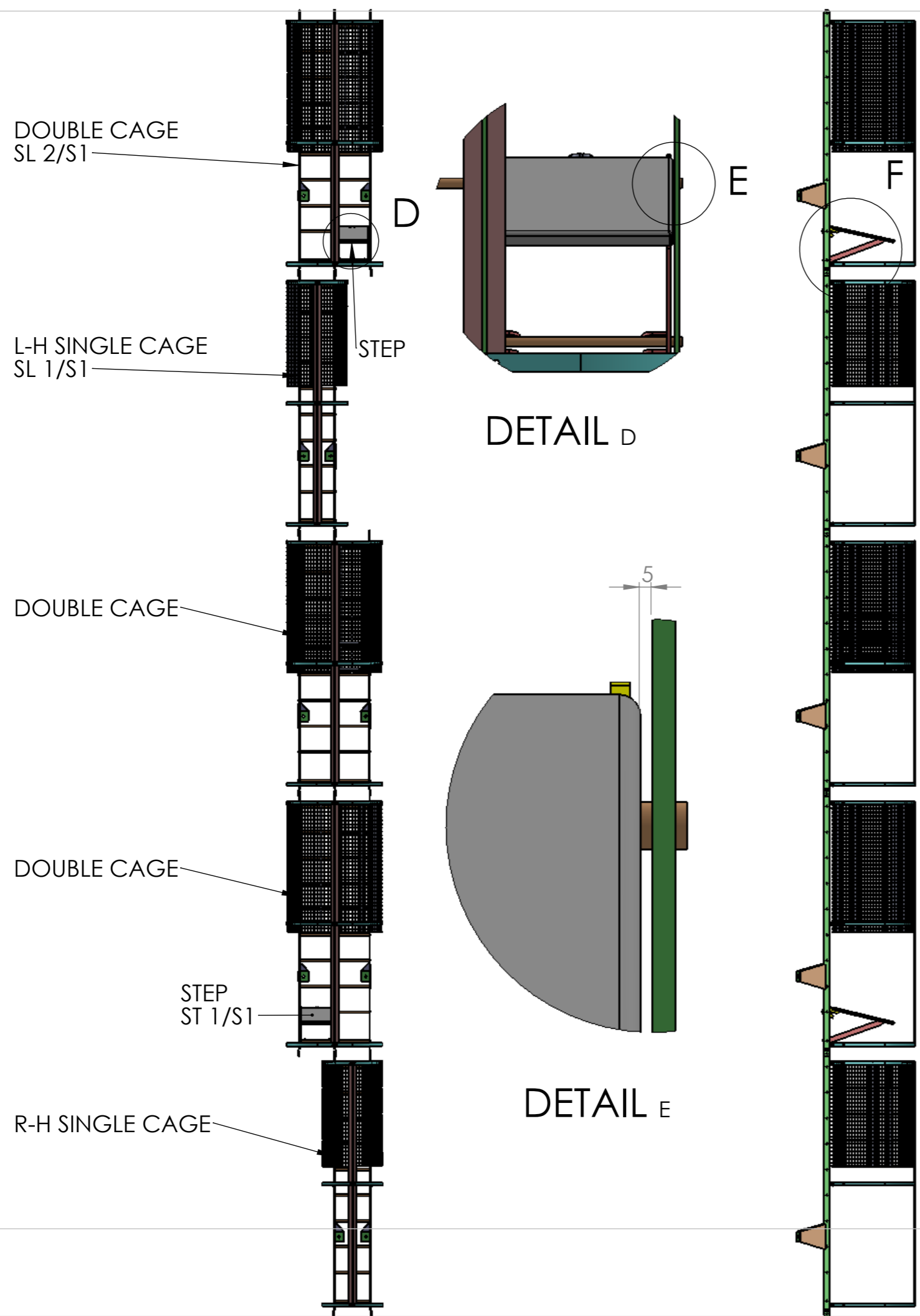
WELDING SYMBOLS TO SABS 044 PART 2  
HYDRAULIC & PNEUMATIC SYMBOLS TO  
ISO 1219  
PIPE & VALVE SYMBOLS TO BS 1553 PART 1  
SURFACE TEXTURE SYMBOLS TO  
ISO 1302 Ra VALUES  
SCREW THREADS (ISO METRIC) TO  
BS 3643 (U.O.S.)

**SINGLE  
LADDER  
STACKS**

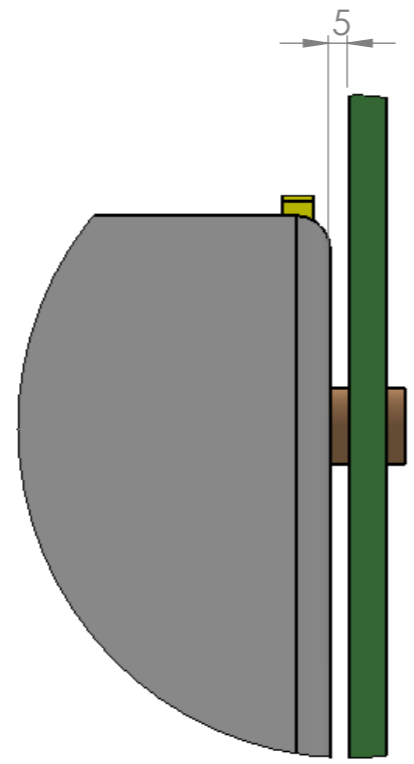
GEMINI ENGINEERING IS THE OWNER OF THE COPY RIGHT SUBSITING IN THIS DRAWING AND ALL RELATED DESIGNS. THIS DAWING MAY ONLY BE USED FOR THE SPESIFIC PURPOSE FOR WHICH IT HAS BEEN PROVIDED. COPYING IN WHOLE OR IN PART IS STRICKLY FORBIDDEN WITHOUT THE WRITTEN CONCENT OF GEMINI ENGINEERING. ANY CHANGES TO THE DRAWING WITHOUT GEMINI ENGINEERING APPROVAL IS ALSO STRICKTELTY FORBIDDEN.

**SL 4/S1**

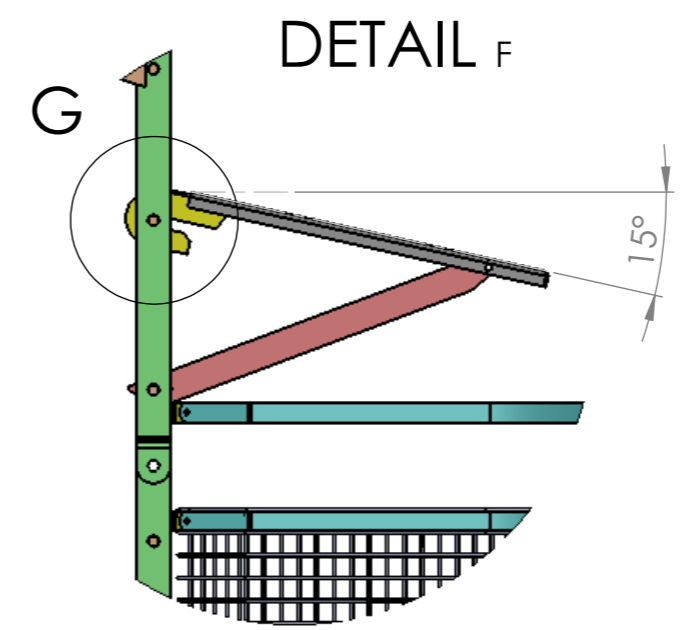
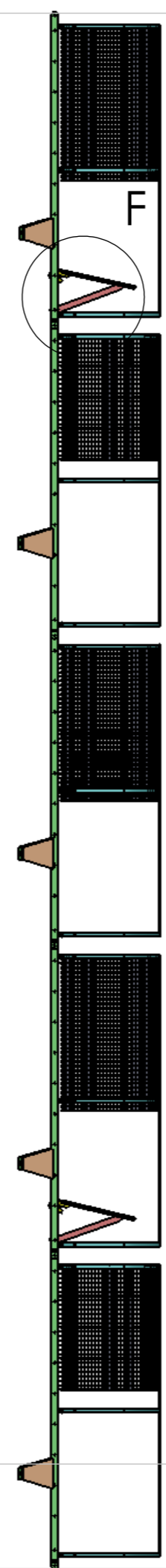
**A3**



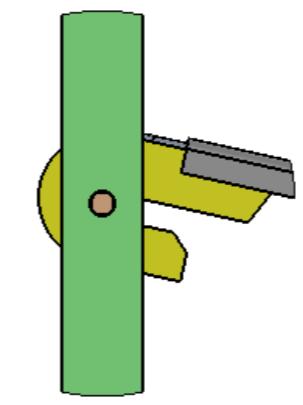
DETAIL D



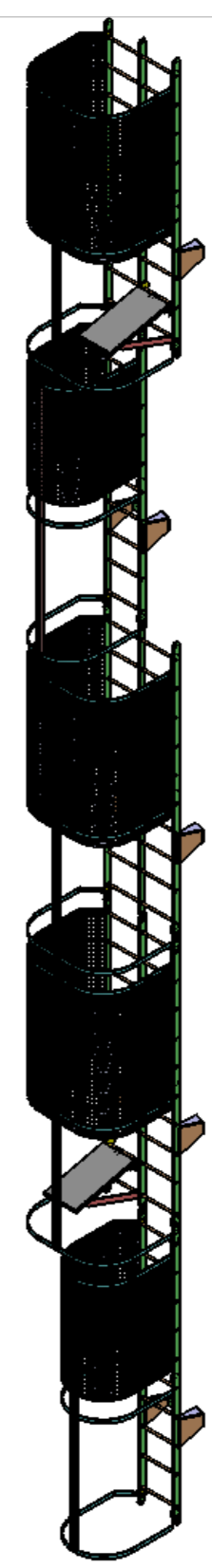
DETAIL E



DETAIL F



DETAIL G



**Gemini Engineering**  
Structural & Mechanical Design & Fabrication

DRN: J.P.  
DATE: 5/09/2014  
SCALE: DO NOT SCALE

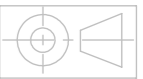
TOLERANCE U.O.S.			
ABOVE	INCL.	MACH. TOL	GEN. TOL
0.5	6	0.1	0.25
6	30	0.2	0.5
30	120	0.3	0.75
120	315	+0.5	+1
315	1000	-0.8	-2
1000	2000	1.2	3
2000	4000	2	5

WELDING SYMBOLS TO SABS 044 PART 2  
HYDRAULIC & PNEUMATIC SYMBOLS TO ISO 1219  
PIPE & VALVE SYMBOLS TO BS 1553 PART 1  
SURFACE TEXTURE SYMBOLS TO ISO 1302 Ra VALUES  
SCREW THREADS (ISO METRIC) TO BS 3643 (U.O.S.)

**SINGLE & DOUBLE LADDERS AND STEPS**

GEMINI ENGINEERING IS THE OWNER OF THE COPY RIGHT SUBSITING IN THIS DRAWING AND ALL RELATED DESIGNS. THIS DAWING MAY ONLY BE USED FOR THE SPECIFIC PURPOSE FOR WHICH IT HAS BEEN PROVIDED. COPYING IN WHOLE OR IN PART IS STRICKLY FORBIDDEN WITHOUT THE WRITTEN CONCENT OF GEMINI ENGINEERING. ANY CHANGES TO THE DRAWING WITHOUT GEMINI ENGINEERING APPROVAL IS ALSO STRICKTELTY FORBIDDEN.

**SL 4/S2**      **A3**



DOUBLE CAGE  
SL 2/S1

STEP  
ST 1/S1

DOUBLE CAGE

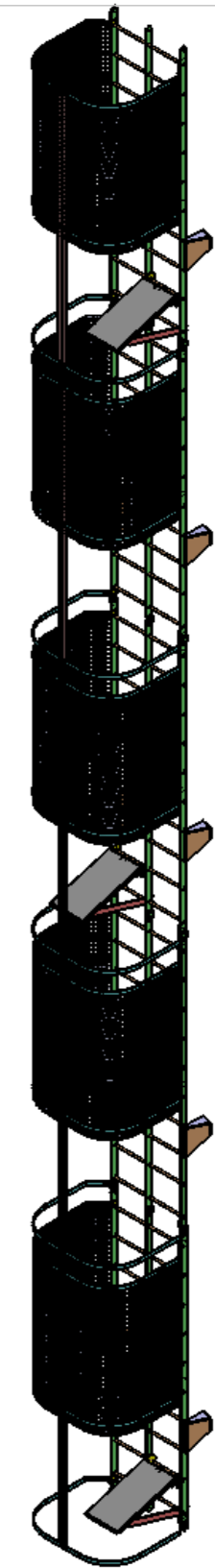
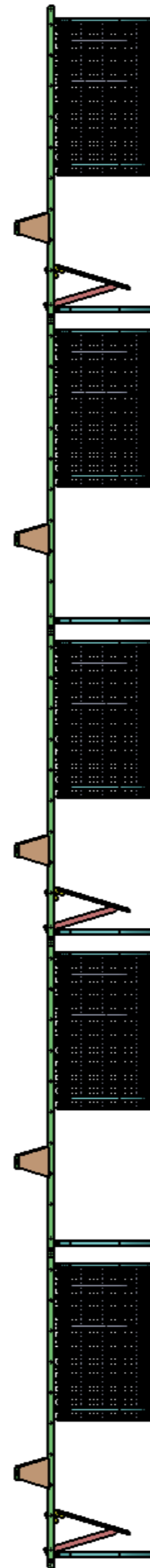
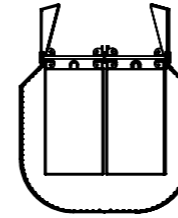
DOUBLE CAGE

STEP

DOUBLE CAGE

DOUBLE CAGE

STEP



**Gemini Engineering**  
Structural & Mechanical Design & Fabrication

DRN: J.P.  
DATE: 5/09/2014  
SCALE: DO NOT SCALE

TOLERANCE U.O.S.		MACH. TOL		GEN. TOL	
0.5	6	0.1	0.25		
6	30	0.2	0.5		
30	120	0.3	0.75		
120	315	+0.5	+1		
315	1000	-0.8	-2		
1000	2000	1.2	3		
2000	4000	2	5		

WELDING SYMBOLS TO SABS 044 PART 2  
HYDRAULIC & PNEUMATIC SYMBOLS TO  
ISO 1219  
PIPE & VALVE SYMBOLS TO BS 1553 PART 1  
SURFACE TEXTURE SYMBOLS TO  
ISO 1302 Ra VALUES  
SCREW THREADS (ISO METRIC) TO  
BS 3643 (U.O.S.)

**DOUBLE LADDER & STEPS**

GEMINI ENGINEERING IS THE OWNER OF THE COPY RIGHT SUBSITING IN THIS DRAWING AND ALL RELATED DESIGNS. THIS DAWING MAY ONLY BE USED FOR THE SPESIFIC PURPOSE FOR WHICH IT HAS BEEN PROVIDED. COPYING IN WHOLE OR IN PART IS STRICKLY FORBIDDEN WITHOUT THE WRITTEN CONCENCT OF GEMINI ENGINEERING. ANY CHANGES TO THE DRAWING WITHOUT GEMINI ENGINEERING APPROVAL IS ALSO STRICKTELTY FORBIDDEN.

**SL 4/S3**      **A3**